



UTV & ATV Armor Kit Installation Tips

Thank for your purchase of this Ricochet Off-Road Armor Kit. All of our kits are custom designed to fit each model and should install hassle free with no additional modifications required. Please carefully read through all included instruction sheets before beginning your install.

The tips described on this sheet are general mounting tips that may or may not apply to your particular model, refer to the attached model specific instructions for a step by step mounting procedure.

If you do encounter a problem during installation please check the FAQ on our website or feel free to contact us by phone or email using the contact info at the bottom of this page.

Required Tools:

(refer to your hardware placement guide for bolt sizes)

Button Head TORX Bolts: (socket bit is highly recommended)

8mm bolts use a T-40 TORX bit

6mm bolts use a T-30 Torx bit

Hex Bolts & Nuts:

10mm bolts uses 17mm

8mm bolts uses 13mm

6mm bolts uses 10mm

1/4"-20 bolts uses 7/16"

Drill Bits:

While we try to avoid drilling whenever possible some models require one or two mounting points to be match drilled. When instructions call for a drilled mounting point use an **11/32"** bit to match drill through the mounting point on the skid plate only after the plate has been fully secured to your machine using the other hardware listed on your hardware guide.

Locking Nuts:

Most sets will include two types of locking nuts. Loose nuts are Nylock, and any nuts welded onto other hardware are pinch-style Stover lock nuts. It is highly recommended that you use a bit of Anti-seize or a drop of oil on the threads of the welded-on pinch style nuts, this will make the bolts go on and come off much easier.

Other helpful tips:

- Before you begin the installation organize all the included hardware according to the hardware placement sheet so you can quickly find the correct bolts and brackets when you need them.
- Install all bolts finger-tight at first until all hardware has been installed, this will give you maximum adjustability.
- When using the cupped washers to secure the plates to factory mounting points do not over torque the bolts because the threads can strip easily. If you do strip one out the simplest way to repair the thread is to use a 1/4"-20 x 5/8" self tapping bolt.
- You may find it easier to remove the rear tires when installing the rear a-arm guards, it's typically very tight and hard to see when the tires are left on.

Contact us at 1-866-273-1197 or dh_gibbs@comcast.net with any questions or concerns.

Hardware List for P/N 7660/F

Bash Plate (P/N 760T)

- 5) 8 x 25mm Button Head Bolts
- 5) 8mm Flat Washers
- 4) #700-06 Nut Plates
- 1) #700-59 Nut Plate

Center Skid Plate (P/N 760M)

- 12) 1/4 x 20 Hex Bolts
- 12) 1/4" Lock Washers
- 12) #833 Cupped Washer

Rear Skid Plate (P/N 760R)

- 2) 8 x 25mm Button Head Bolts
- 1) 1/4 x 20 Hex Bolt
- 2) 8mm Flat Washers
- 1) 1/4" Lock Washer
- 1) #833 Cupped Washer
- 2) #700-59 Nut Plate

Floorboard Skids (P/N 760FBA & 760FBB)

- 8) 8 x 20mm Button Head Bolts
- 4) 8 x 25mm Button Head Bolts
- 4) 5/16" HD Flat Washers (larger washer)
- 8) 8mm Flat Washers
- 4) #700-36 Nut Plates
- 4) #700-07 Nut Plates

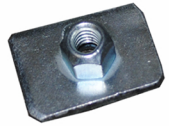
Front A-Arm Guards (P/N 753AFA & 753AFB)

- 6) 1" Clamps
- 6) 8 x 20mm Button Head Bolts
- 6) 8mm Flat Washers

Rear A-Arm Guards (P/N 755ARA & 755ARB)

- 8) #826 Clamps
- 8) 8 x 20mm Button Head Bolts
- 8) 8mm Flat washers

700-06



700-07



700-36



700-59



Mouting Tips

- Begin by removing all factory plastic skid plates.
- Apply a drop of oil or anti-sieze compound to the threads off each of the locking nuts welded on to the clamps and nut plates.
- Install the #700-07 Nut Plate inside the floor board bracing bar as shown in Fig 1. Use the larger HD washer & the 8 x 20mm Bolt to secure it in place.
- Slide the #700-36 Nut Plate into place inside the floorboard bracing bar as shown in Fig 2.
- Now install your skid plates using the hardware listed on your hardware placement guide, leave everything loose at first until all the bolts are threaded into place. Then you may tighten everything down keeping the plates butted up against one another to create smooth transitions between the plates

Fig 1

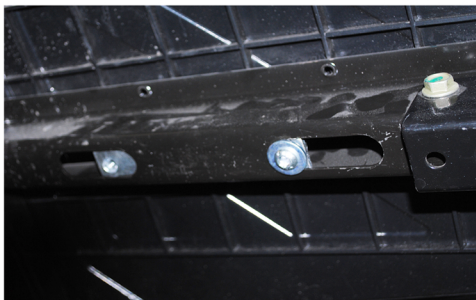
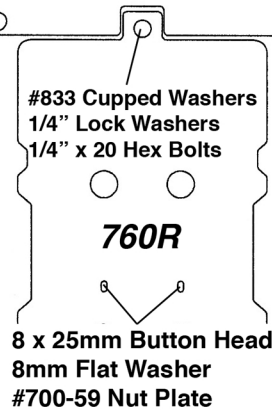
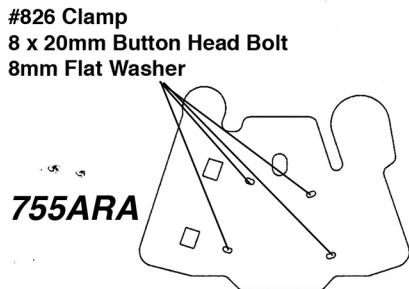
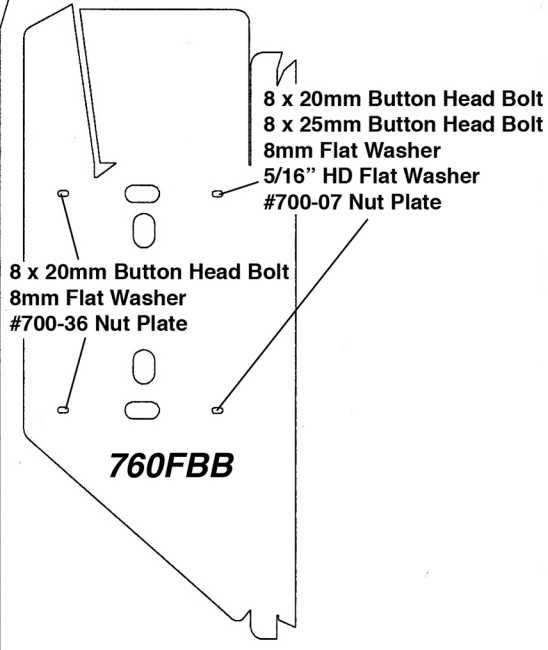
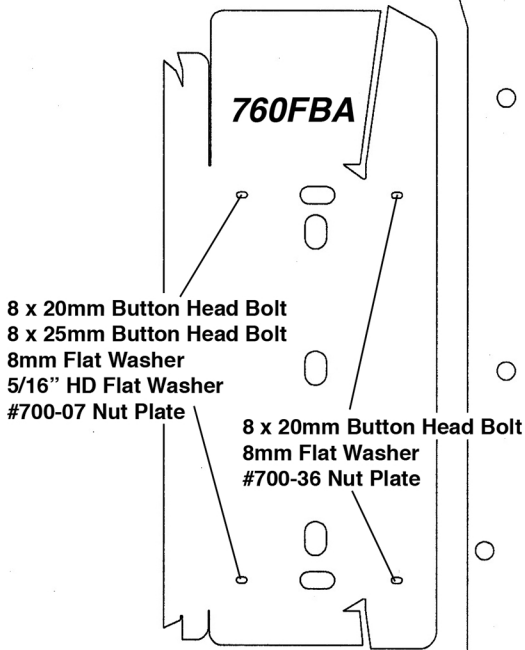
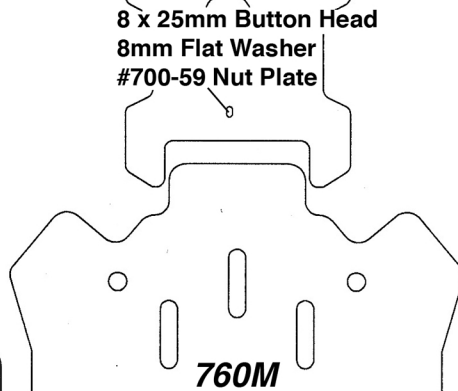
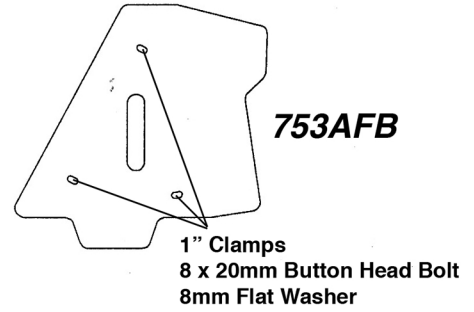
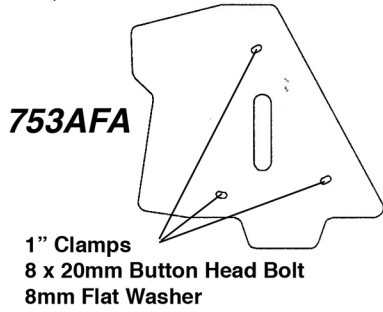
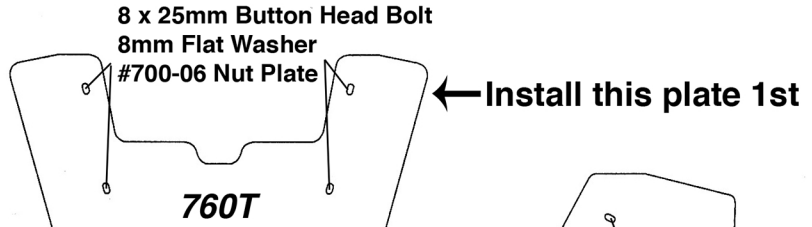


Fig 2



Clamp & Hardware Placement Guide for P/N 7660/F





UTV & ATV Armor Kit Installation Tips

Thank for your purchase of this Ricochet Off-Road Armor Kit. All of our kits are custom designed to fit each model and should install hassle free with no additional modifications required. Please carefully read through all included instruction sheets before beginning your install.

The tips described on this sheet are general mounting tips that may or may not apply to your particular model, refer to the attached model specific instructions for a step by step mounting procedure.

If you do encounter a problem during installation please check the FAQ on our website or feel free to contact us by phone or email using the contact info at the bottom of this page.

Required Tools:

(refer to your hardware placement guide for bolt sizes)

Button Head TORX Bolts: (socket bit is highly recommended)

8mm bolts use a T-40 TORX bit

6mm bolts use a T-30 Torx bit

Hex Bolts & Nuts:

10mm bolts uses 17mm

8mm bolts uses 13mm

6mm bolts uses 10mm

1/4"-20 bolts uses 7/16"

Drill Bits:

While we try to avoid drilling whenever possible some models require one or two mounting points to be match drilled. When instructions call for a drilled mounting point use an **11/32"** bit to match drill through the mounting point on the skid plate only after the plate has been fully secured to your machine using the other hardware listed on your hardware guide.

Locking Nuts:

Most sets will include two types of locking nuts. Loose nuts are Nylock, and any nuts welded onto other hardware are pinch-style Stover lock nuts. It is highly recommended that you use a bit of Anti-seize or a drop of oil on the threads of the welded-on pinch style nuts, this will make the bolts go on and come off much easier.

Other helpful tips:

- Before you begin the installation organize all the included hardware according to the hardware placement sheet so you can quickly find the correct bolts and brackets when you need them.
- Install all bolts finger-tight at first until all hardware has been installed, this will give you maximum adjustability.
- When using the cupped washers to secure the plates to factory mounting points do not over torque the bolts because the threads can strip easily. If you do strip one out the simplest way to repair the thread is to use a 1/4"-20 x 5/8" self tapping bolt.
- You may find it easier to remove the rear tires when installing the rear a-arm guards, it's typically very tight and hard to see when the tires are left on.

Contact us at 1-866-273-1197 or dh_gibbs@comcast.net with any questions or concerns.

Hardware List & Mounting Instructions for P/N 7667/F

Main Aluminum Skid Plates

(p/n 767T, 767M1, 767M3, 767R)

- 13) #833 Gold Cupped Washers
- 4) #700-06 Nut Plates
- 2) #839 Square Clamp
- 13) 6mm Flange Bolts
- 14) 8 x 25mm Button Head Bolts
- 22) 8mm Flat Washers
- 8) 8mm Nylock Nuts
- 1) 6mm Tap & Handle

Rock Sliders

(p/n 767FBA, 767FBB)

- 2) #700-07 Bar Clamps
- 2) #700-13 Spacers
- 6) 8 x 25mm Button Head Bolts
- 2) 8 x 55mm Button Head Bolts
- 4) 8mm Nylock Nuts
- 12) 8mm Flat Washers

Front A-Arm Guards

(p/n 767AFA, 767AFB)

- 6) 1" Clamps
- 6) 8 x 20mm Button Head Bolts
- 6) 8mm Flat Washers

Rear A-Arm Guards

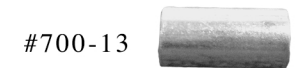
(p/n 767ARA, 767ARB)

- 2) #700-40 Nut Plates
- 4) #835 Clamps
- 4) 8 x 25mm Button Head Bolts
- 4) 8 x 20mm Button Head Bolts
- 8) 8mm Flat Washers

UHMW Layer

(p/n 767P1, 767P2)

- 25) #833 Gold Cupped Washers
- 25) 6mm Flange Bolts
- 2) #832-8 Silver Cupped Washers
- 2) 8 x 35mm Button Head Bolts



Mounting Instructions

1. Remove all factory plastic skid plates
2. Some of the mounting points used to install the main aluminum skid plates will need to be tapped to a 6mm thread, we have included a tap and handle for this. You can use the skid plates as a reference to where each mounting point is located. Hold each skid plate into place lining up the 1" holes on the skid plate with the threaded mounts used to install the factory plastic skid plate, you will notice some of the outer mounting points not used by the factory skid will need to be tapped. Apply a bit of oil to the tap and twist it completely through each hole. If you have trouble threading bolts into any of the pre-tapped holes you can also use the 6mm tap to chase out these threads.
3. Once all the mounting points have threads you can install your main aluminum skid plates using the gold cupped washers with the 6mm Flange bolts. Install the 767M1 skid first, hang the skid from the frame loosely using the cupped washers and then install the #839 clamp around the center frame tube and bolt the plate to the clamps using an 8 x 25mm button head bolt with washer. Do not tighten any bolts down at this time, install the rest of the main skid plates in any order leaving everything loose so that the plate's positions can still be adjusted. Note that the 767M3 plate uses two 8 x 25mm button head bolts secured to the frame with a nylock nut and the 767R skid uses the #700-06 nut plates braced behind the steel plate welded to the frame as shown in fig. 1. If you are installing the UHMW layer do not install the two rear #700-06 nut plates at this time.
4. Once all the mounting hardware has been installed you can begin tightening everything down while making sure each plate butts firmly against each adjacent plate.
5. Now you can install your rock sliders. Before you mount the rock slider place the #700-07 bar clamp across the oval hole on the steel plate welded to the frame just behind the front tire as shown in fig. 2. You can use the access hole in the skid plate to align the bar clamp with the mounting holes on the rock slider as you feed in the 8 x 25mm button head bolts.
6. With the #700-07 brackets in place install your rock slider using the 8 x 25mm button head bolts with washers. Complete the installation by securing the rear section using the 8 x 55mm button head bolts fed through the spacer and secured with a nylock nut as shown in fig. 3. And finally secure the rear tab to the frame tube using the 8 x 25mm button head bolt with nylock nut and washers.
7. Now install your front and rear a-arm guards using the hardware shown on your hardware placement guide. Hold the A-arm guard into place as you wrap each clamp around the a-arm tube and feed in an 8 x 20mm button head bolt. The bar clamp sits on top of the bracing plate on the rear a-arm and is mounted with the 8 x 25mm button head bolts. Once the a-arm guards are installed turn the wheel to full lock in both directions, checking for any interferences. If an interference exists loosen the bolts and adjust the guards position accordingly.
8. If you have purchased the UHMW layer you can install that now, using the gold cupped washers and flange bolts mounted to each threaded insert on the aluminum skid plates. The only exception is the two rear-most mounting points which will use the silver cupped washers with the 8 x 35mm button head bolts inserted through the rear mounting points on the aluminum skid plate and secured to the frame with the #700-06 nut plates.

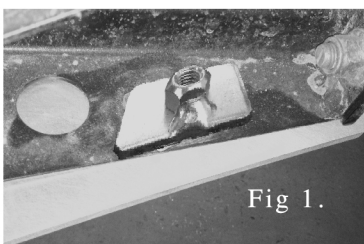


Fig 1.

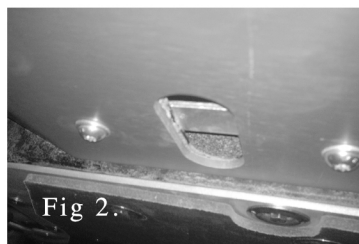


Fig 2.

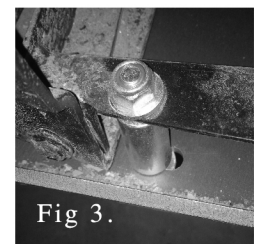
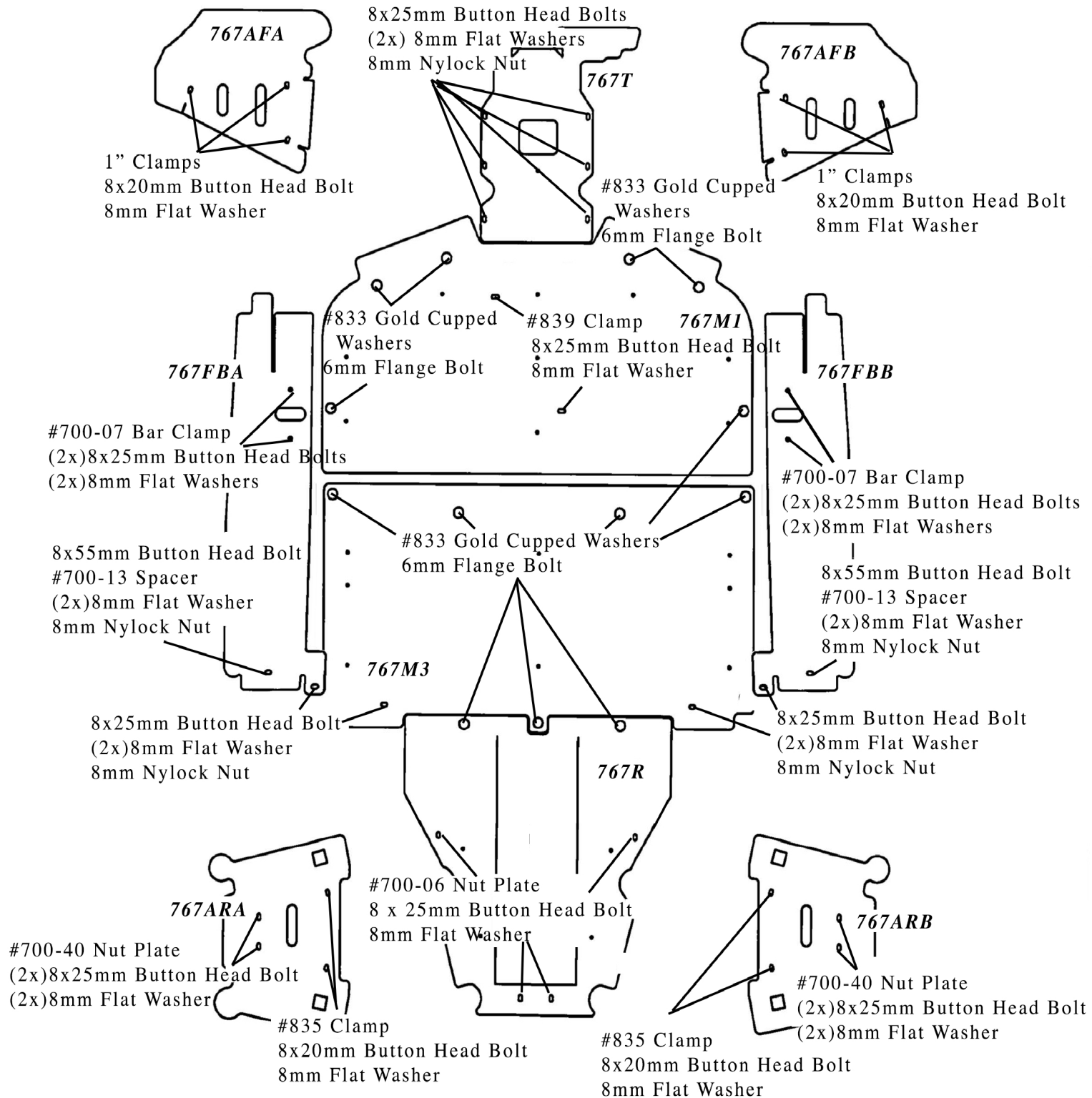


Fig 3.

Hardware Placement Guide for P/N 7667/F



Ricochet UTV & ATV Armor Kit Installation Tips

Thank for your purchase of this Ricochet Off-Road Armor Kit. All of our kits are custom designed to fit each model and should install hassle free with no additional modifications required. Please carefully read through all included instruction sheets before beginning your install.

The tips described on this sheet are general mounting tips that may or may not apply to your particular model, refer to the attached model specific instructions for a step by step mounting procedure.

If you do encounter a problem during installation please check the FAQ on our website or feel free to contact us by phone or email using the contact info at the bottom of this page.

Required Tools:

(refer to your hardware placement guide for bolt sizes)

Button Head TORX Bolts: (socket bit is highly recommended)

8mm bolts use a T-40 TORX bit

6mm bolts use a T-30 Torx bit

Hex Bolts & Nuts:

10mm bolts uses 17mm

8mm bolts uses 13mm

6mm bolts uses 10mm

1/4"-20 bolts uses 7/16"

Drill Bits:

While we try to avoid drilling whenever possible some models require one or two mounting points to be match drilled. When instructions call for a drilled mounting point use an **11/32"** bit to match drill through the mounting point on the skid plate only after the plate has been fully secured to your machine using the other hardware listed on your hardware guide.

Locking Nuts:

Most sets will include two types of locking nuts. Loose nuts are Nylock, and any nuts welded onto other hardware are pinch-style Stover lock nuts. It is highly recommended that you use a bit of Anti-seize or a drop of oil on the threads of the welded-on pinch style nuts, this will make the bolts go on and come off much easier.

Other helpful tips:

- Before you begin the installation organize all the included hardware according to the hardware placement sheet so you can quickly find the correct bolts and brackets when you need them.
- Install all bolts finger-tight at first until all hardware has been installed, this will give you maximum adjustability.
- When using the cupped washers to secure the plates to factory mounting points do not over torque the bolts because the threads can strip easily. If you do strip one out the simplest way to repair the thread is to use a 1/4"-20 x 5/8" self tapping bolt.
- You may find it easier to remove the rear tires when installing the rear a-arm guards, it's typically very tight and hard to see when the tires are left on.

Contact us at 1-866-273-1197 or dh_gibbs@comcast.net with any questions or concerns.

Mounting Instructions and hardware list
For Part # 9221 2017 Polaris Ranger570 Full Size

Step One: Remove all of the factory plastic skids. Also remove the plastic on the front A arms.

Step Two: Take the top plate (760T) And set it into position. Start the front four bolts with the 700-06 nut plates behind them. Use anti seize on these bolts. Leave these bolts loose for now.

Step Three: Now start the rear bolt using the 700-59 nut plate on the back. Use anti seize on this bolt.

Step Four: Square up the plate and tighten all bolts.

Step Five: Get the main belly skid (921M) and set it into position. Using the supplied self tapping bolts and cup washers, get all of the hardware started. Some points on this skid are not threaded from the factory. We have supplied self tapping bolts to remedy this. On the points that are not tapped, simply push on the bolt while turning it, and it will cut the thread as you install it. Leave all bolts loose for now.

Step Six: Get the rear plate (789R) into position. Start the two middle bolts first, using the 700-06 nut plates. Use anti seize on these bolts and leave loose for now.

Step Seven: Start the front two mounts using the self tapping bolts and cup washers.

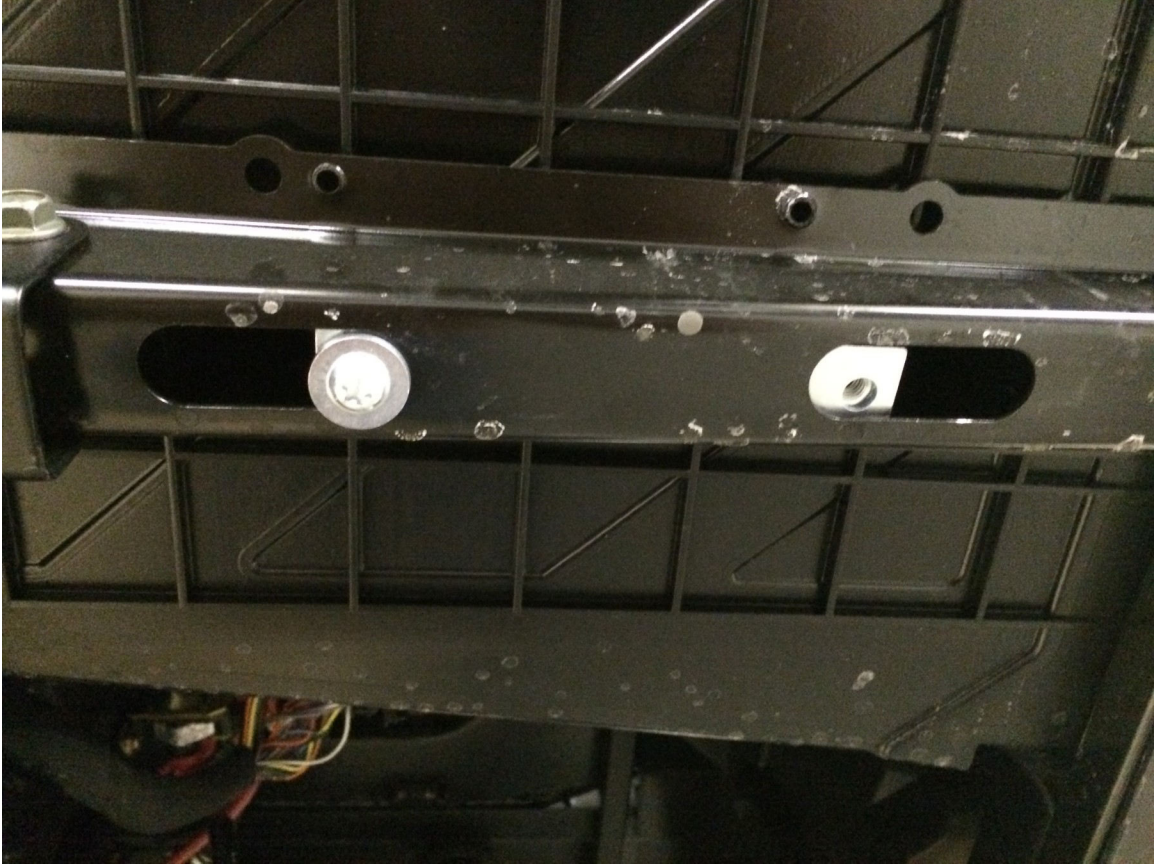
Step Eight: Start the two rear bolts with 700-06 nut plates. Use anti seize on these bolts.

Step Nine: Square up the main belly plate, and the rear plate and tighten all hardware.

Step Ten: With the front wheels off of the ground, mount the front a arms using the supplied clamps. Use anti seize on all of these bolts. Snug up the bolts, but do not tighten them yet. Now you need to check for clearance all the way around. Turn the steering wheel from lock to lock, while confirming you have clearance. Once the plate is in position and you have clearance, you can tighten the bolts. Use the same procedure for the other side.

Step Ten: Mounting the rear a arm guards is similar to the front. Put the plate in position and start all of the bolts with the clamps. Confirm that you have clearance to the a arm skid. The rear is a little easier as the rear wheels don't steer. Once you have clearance you can tighten all of the bolts. Use anti seize on these bolts. Mounting is the same procedure from left to right.

Step Eleven: Install your 700-07 bar clamp into the floorboard supports. Then secure the bar clamp with an 8x20 Bolt and a Heavy Duty Washer. You may need to pry the floorboard plastic up a little with a screwdriver to get the bar clamp in the frame. Here is how it will look when it's installed.



You will do this two times on each side of the machine.

Step Twelve: Insert your 700-36 Nut plate into the floorboard support, next to where you just installed the bar clamp. The nut plate is chamfered on one side. The chamfer will face down. Here is a picture of this installed:



Step Thirteen: Set the floorboard skid into position and start your bolts into the bar clamp and nut plate you just installed. Use anti seize on all of these bolts, and leave loose for now.

Step Fourteen: Square up the floorboard skid for the best fit and tighten all of your bolts. Repeat the same procedure for the other side of the machine.

Step Fifteen: The very front mount of the floorboard plates needs to be drilled out. Use an 11/32 (.344) Drill bit and match drill through the plastic using your floorboard as a guide. Install the 8x30 bolt and washer through the skid from the bottom side. Install the HD (larger) washer and nut on the bolt and tighten them down. Repeat the same procedure for both sides.

Hardware List for Part# 9221F

760T

- 5) 8x25 Torx Bolts
- 5) M8 washers
- 4) 700-06 nut plates
- 1) 700-59 Nut plate

789R

- 2) 833 Cup Washers
- 2) 1/4-20 x 3/4 Self Tapping Bolts
- 4) 8x25 Torx Bolts
- 4) M8 Washers
- 4) 700-06 Nut Plates

921AF

- 6) 1" Clamps
- 6) 8x20 Torx Bolts
- 6) M8 Washers

921M

- 11) 833 Cup Washers
- 11) 1/4-20 x 3/4 Self Tapping Bolts

921FB

- 8) 8x20 Torx Bolts
- 4) 8x25 Torx Bolts
- 2) 8x30 Torx Bolts
- 6) M8 HD Washers
- 10) M8 Washers
- 4) 700-36 Nut plates
- 4) 700-07 Nut Plates
- 2) M8 Nylock Nuts

789AR

- 8) 826 Clamps
- 8) 8x20 Torx Bolts
- 8) M8 Washers



UTV & ATV Armor Kit Installation Tips

Thank for your purchase of this Ricochet Off-Road Armor Kit. All of our kits are custom designed to fit each model and should install hassle free with no additional modifications required. Please carefully read through all included instruction sheets before beginning your install.

The tips described on this sheet are general mounting tips that may or may not apply to your particular model, refer to the attached model specific instructions for a step by step mounting procedure.

If you do encounter a problem during installation please check the FAQ on our website or feel free to contact us by phone or email using the contact info at the bottom of this page.

Required Tools:

(refer to your hardware placement guide for bolt sizes)

Button Head TORX Bolts: (socket bit is highly recommended)

8mm bolts use a T-40 TORX bit

6mm bolts use a T-30 Torx bit

Hex Bolts & Nuts:

10mm bolts uses 17mm

8mm bolts uses 13mm

6mm bolts uses 10mm

1/4"-20 bolts uses 7/16"

Drill Bits:

While we try to avoid drilling whenever possible some models require one or two mounting points to be match drilled. When instructions call for a drilled mounting point use an **11/32"** bit to match drill through the mounting point on the skid plate only after the plate has been fully secured to your machine using the other hardware listed on your hardware guide.

Locking Nuts:

Most sets will include two types of locking nuts. Loose nuts are Nylock, and any nuts welded onto other hardware are pinch-style Stover lock nuts. It is highly recommended that you use a bit of Anti-seize or a drop of oil on the threads of the welded-on pinch style nuts, this will make the bolts go on and come off much easier.

Other helpful tips:

- Before you begin the installation organize all the included hardware according to the hardware placement sheet so you can quickly find the correct bolts and brackets when you need them.
- Install all bolts finger-tight at first until all hardware has been installed, this will give you maximum adjustability.
- When using the cupped washers to secure the plates to factory mounting points do not over torque the bolts because the threads can strip easily. If you do strip one out the simplest way to repair the thread is to use a 1/4"-20 x 5/8" self tapping bolt.
- You may find it easier to remove the rear tires when installing the rear a-arm guards, it's typically very tight and hard to see when the tires are left on.

Contact us at 1-866-273-1197 or dh_gibbs@comcast.net with any questions or concerns.

Hardware List for P/N 7889/F

Bash Plate (P/N 760T)

- 5) 8 x 25mm Button Head Bolts
- 5) 8mm Flat Washers
- 4) #700-06 Nut Plates
- 1) #700-59 Nut Plate

Center Skid Plate (P/N 789M)

- 9) 1/4"-20 X 3/4 Hex Bolts
- 9) 1/4" Lock Washers
- 9) #833 Cupped Washer

Rear Skid Plate (P/N 789R)

- 4) 8 x 25mm Button Head Bolts
- 4) 8mm Flat Washers
- 4) #700-06 Nut Plates
- 2) #833 Cupped Washer
- 2) 1/4"-20 X 3/4" Hex Bolts
- 2) 1/4" Lock Washers

Floorboard Skids (P/N 755FBA & 755FBB)

- 8) 8 x 20mm Button Head Bolts
- 4) 8 x 25mm Button Head Bolts
- 2) 8 x 30mm Button Head Bolts
- 6) 5/16" HD Flat Washers (larger washer)
- 10) 8mm Flat Washers
- 4) #700-36 Nut Plates
- 4) #700-07 Nut Plates
- 2) 8mm Nylock Nuts

Front A-Arm Guards

- (P/N 921AFA & 921 AFB)
- 6) 1" Clamps
 - 6) 8 x 20mm Button Head Bolts
 - 6) 8mm Flat Washers

Rear A-Arm Guards

- (P/N 789ARA & 789ARB)
- 8) #826 Clamps
 - 8) 8 x 20mm Button Head Bolts
 - 8) 8mm Flat washers

700-06



700-07



700-36



700-59



Mouting Tips

-Begin by removing all factory plastic skid plates.

-Apply a drop of oil or anti-sieze compound to the threads of each of the locking nuts welded on to the clamps and nut plates.

-Organize all your hardware according to your hardware placement guide so that it's easy to find when you need it.

-Install the #700-07 Nut Plate inside the floor board bracing bar as shown in Fig 1. Use the larger HD washer & the 8 x 20mm Bolt to secure it in place.

-Slide the #700-36 Nut Plate into place inside the floorboard bracing bar as shown in Fig 2.

-Now install your skid plates using the hardware listed on your hardware placement guide, leave everything loose at first until all the bolts are threaded into place. Then you may tighten everything down keeping the plates butted up against one another to create smooth transitions between the plates.

- Now you can install your A-arm guards by holding the guard into place while you loosely secure each required piece of hardware as shown on your hardware placement guide.

-Once all the hardware is in place go ahead and tighten every thing down. Be sure to turn your wheels full lock in both directions checking for any interferences. If there is an interference, loosen the bolts and reposition your guard accordingly.

Fig 1



Fig 2



Clamp & Hardware Placement Guide for P/N 9221F

8 x 25mm Button Head Bolt
8mm Flat Washer
#700-06 Nut Plate

760T
Install this plate 1st

8 x 25mm Button Head
8mm Flat Washer
#700-59 Nut Plate

1" Clamp
8 x 20mm Button Head Bolt
8mm Flat Washer

921AFB

1" Clamp
8 x 20mm Button Head Bolt
8mm Flat Washer

921AFA

789M

#833 Cupped Washers
1/4" Lock Washers
1/4"-20 x 3/4" Hex Bolts
(all locations on this plate
and front two on rear plate)

(Optional Mounting Point)
8 x 30mm Button Head Bolt
8mm Flat Washer
HD-8mm Flat Washer*
8mm Nylock Nut
*(Install Larger Washer on
floorboard side)

8 x 20mm Button Head Bolt
8 x 25mm Button Head Bolt
8mm Flat Washer
5/16" HD Flat Washer
#700-07 Nut Plate

8 x 20mm Button Head Bolt
8mm Flat Washer
#700-36 Nut Plate

755FBB

(Optional Mounting Point)
8 x 30mm Button Head Bolt
8mm Flat Washer
HD 8mm Flat Washer*
8mm Nylock Nut
*(Install Larger Washer on
floorboard side)

8 x 20mm Button Head Bolt
8 x 25mm Button Head Bolt
8mm Flat Washer
5/16" HD Flat Washer
#700-07 Nut Plate

755FBA

8 x 20mm Button Head Bolt
8mm Flat Washer
#700-36 Nut Plate

789R

8 x 25mm Button Head Bolt
8mm Flat Washer
#700-06 Nut Plate

#826 Clamp
8 x 20mm Button Head Bolt
8mm Flat Washer

789ARA

#826 Clamp
8 x 20mm Button Head Bolt
8mm Flat Washer

789ARB

Ricochet UTV & ATV Armor Kit Installation Tips

Thank for your purchase of this Ricochet Off-Road Armor Kit. All of our kits are custom designed to fit each model and should install hassle free with no additional modifications required. Please carefully read through all included instruction sheets before beginning your install.

The tips described on this sheet are general mounting tips that may or may not apply to your particular model, refer to the attached model specific instructions for a step by step mounting procedure.

If you do encounter a problem during installation please check the FAQ on our website or feel free to contact us by phone or email using the contact info at the bottom of this page.

Required Tools:

(refer to your hardware placement guide for bolt sizes)

Button Head TORX Bolts: (socket bit is highly recommended)

8mm bolts use a T-40 TORX bit

6mm bolts use a T-30 Torx bit

Hex Bolts & Nuts:

10mm bolts uses 17mm

8mm bolts uses 13mm

6mm bolts uses 10mm

1/4"-20 bolts uses 7/16"

Drill Bits:

While we try to avoid drilling whenever possible some models require one or two mounting points to be match drilled. When instructions call for a drilled mounting point use an **11/32"** bit to match drill through the mounting point on the skid plate only after the plate has been fully secured to your machine using the other hardware listed on your hardware guide.

Locking Nuts:

Most sets will include two types of locking nuts. Loose nuts are Nylock, and any nuts welded onto other hardware are pinch-style Stover lock nuts. It is highly recommended that you use a bit of Anti-seize or a drop of oil on the threads of the welded-on pinch style nuts, this will make the bolts go on and come off much easier.

Other helpful tips:

- Before you begin the installation organize all the included hardware according to the hardware placement sheet so you can quickly find the correct bolts and brackets when you need them.
- Install all bolts finger-tight at first until all hardware has been installed, this will give you maximum adjustability.
- When using the cupped washers to secure the plates to factory mounting points do not over torque the bolts because the threads can strip easily. If you do strip one out the simplest way to repair the thread is to use a 1/4"-20 x 5/8" self tapping bolt.
- You may find it easier to remove the rear tires when installing the rear a-arm guards, it's typically very tight and hard to see when the tires are left on.

Contact us at 1-866-273-1197 or dh_gibbs@comcast.net with any questions or concerns.

Installation Instructions for 9322F 2018 Polaris Ranger 1000

Step One: Remove all of the factory plastic plates

Step Two: Hang the two 839 clamps in their approximate locations on the frame.

Step Three: Now you can mount your 767M1 plate to the machine using the supplied cup washers and flange bolts. Leave these loose for now. * Note: Not all of the holes in the frame are threaded by Polaris from the factory. We have supplied a tap and tap handle so you can tap out those blank holes in the frame. You can tap these holes before or after you mount the skids.

Step Four: Now start the hardware for your 839 Clamps. Use anti seize on these bolts and leave them loose for now.

Step Five: Now you can mount your 767M3 plate to the machine using the cup washers and bolts. Leave these loose for now.

Step Six: Now you can start the M8 nuts and bolts on the rear mounts. Leave these loose for now.

Step Six: Now you can mount the 767R plate. Mount the two cup washers first, and then mount the middle mounts using the nut plates and bolts. Use anti seize on these and leave them loose for now.

Step Seven: Take your two remaining nut plates, and insert them into the frame right behind the rear differential. You will see two holes in the frame that should line up with the mounting holes in the plate. Make sure the hole in the nut plate lines up with the mounting hole in the skid plate, and start the bolts. It may be easier to get the bolts started by supporting the rear of the skid plate with a floor jack. Leave these loose for now.

Step Eight: Align all the skids for the best fit and tighten all of the hardware.

Step Nine: Now you can mount the 932T Front Plate. Set the plate into position and start all of the M8 bolts and nylock nuts. Get the plate aligned for the best fit, and tighten down all of the bolts. This completes your belly skid installation. If you have also purchased our floorboard skids, you are now ready to install those.

Installation instructions for 932FB Ranger 1000 Floor Board Skids

Step One: Remove the three button head Torx bolts underneath the rocker panel on the machine. Save these bolts, they will be reused.

Step Two: If you are installing our skids with the factory Polaris skid plate, you will need to cut the factory Polaris skid plate down the side, where it meets with the edge of the main frame. You can use your floorboard to see where you need to cut the factory plastic. A Dremel will make easy work of this.

Step Three: Take your two 700-06 Nut plates, and set them in the channel of the frame that is welded to the main frame and out to the edge. Line the hole in the nut plate up with the hole in the frame.

Step Four: Now you can get your floorboard skid into position, using the stock bolts you removed and the cup washers provided, mount the floor board skid to the machine. Leave these bolts loose for now.

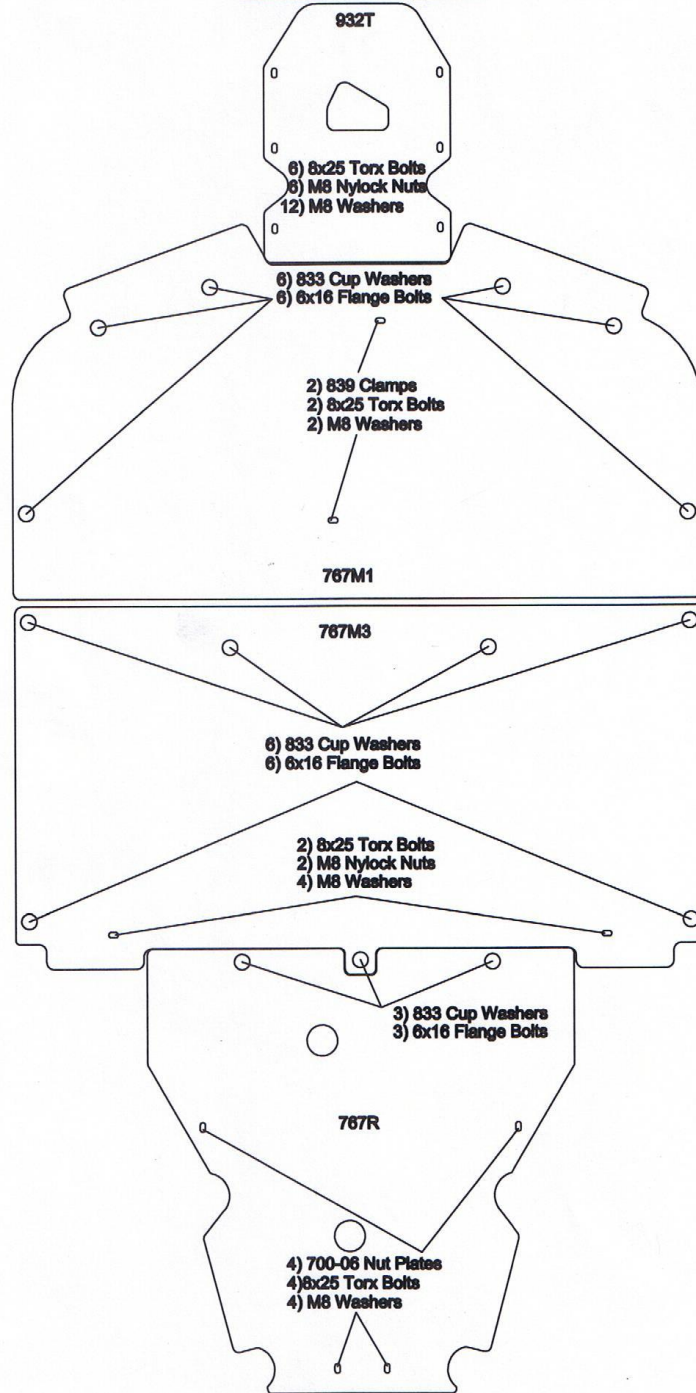
Step Five: Take your 8x35 Torx bolts, and thread them into the nut plates you installed in the frame channel. There is a slot in the skid plate, that you can put your finger through to hold the nut plates down, while you are catching the thread. Leave these bolts loose for now.

Step Six: Take your 8x25 bolt, and insert it through the hole in the rear of the skid plate, and through the hole in the frame. Slide a washer over the bolt, followed by your M8 nylock nut.

Step Seven: Get the plate adjusted to the machine for the best fit, and tighten the two Torx bolts going into the nut plates. Tighten the bolt with the nut at the rear of the plate. And finally tighten down the three stock bolts with the cup washers. Use extreme caution when tightening the stock bolts, as the frame threads can be easily damaged. If you do damage the frame threads, you can use a ¼-20 Self tapping bolt, to secure the plate.

Step Eight: If you are also installing the ¼" overlay UHMW on the floorboard skids, leave the three stock bolts out for now, as they are also a common mount for the overlay UHMW. Secure the overlay plate to the floorboards using the 6x16 Flange bolts and cup washers. Now you can install the three stock bolts with the aluminum spacers in the last three remaining mounts. Use extreme care when tightening the stock bolts. It is the same procedure for the left and the right side of the machine. This completes your floorboard skid installation, and we thank you for your purchase!

9322 Hardware Placement Guide



Hardware List for 9322 Ranger 1000

932T

- 6) 8x25 Hex Bolts
- 12) M8 Washers
- 6) M8 Nylock Nuts

767M3

- 6) 833 Cup Washers
- 6) 6x16 Flange Bolts
- 2) 8x25 Torx Bolts
- 2) M8 Nylcok Nuts
- 4) M8 Washers

932AF

- 8) 1" Clamps
- 8) 8x25 Torx Bolts
- 8) M8 Washers

932FB

- 6) 833 Cup Washers
- 6) 8x25 Torx Bolts
- 8) M8 Washers
- 4) 700-06 nut plates
- 2) M8 Nylock Nuts

767M1

- 6) 833 Cup Washers
- 6) 6x16 Flange Bolts
- 2) 839 Clamps
- 2) 8x25 Torx Bolts
- 2) M8 Washers

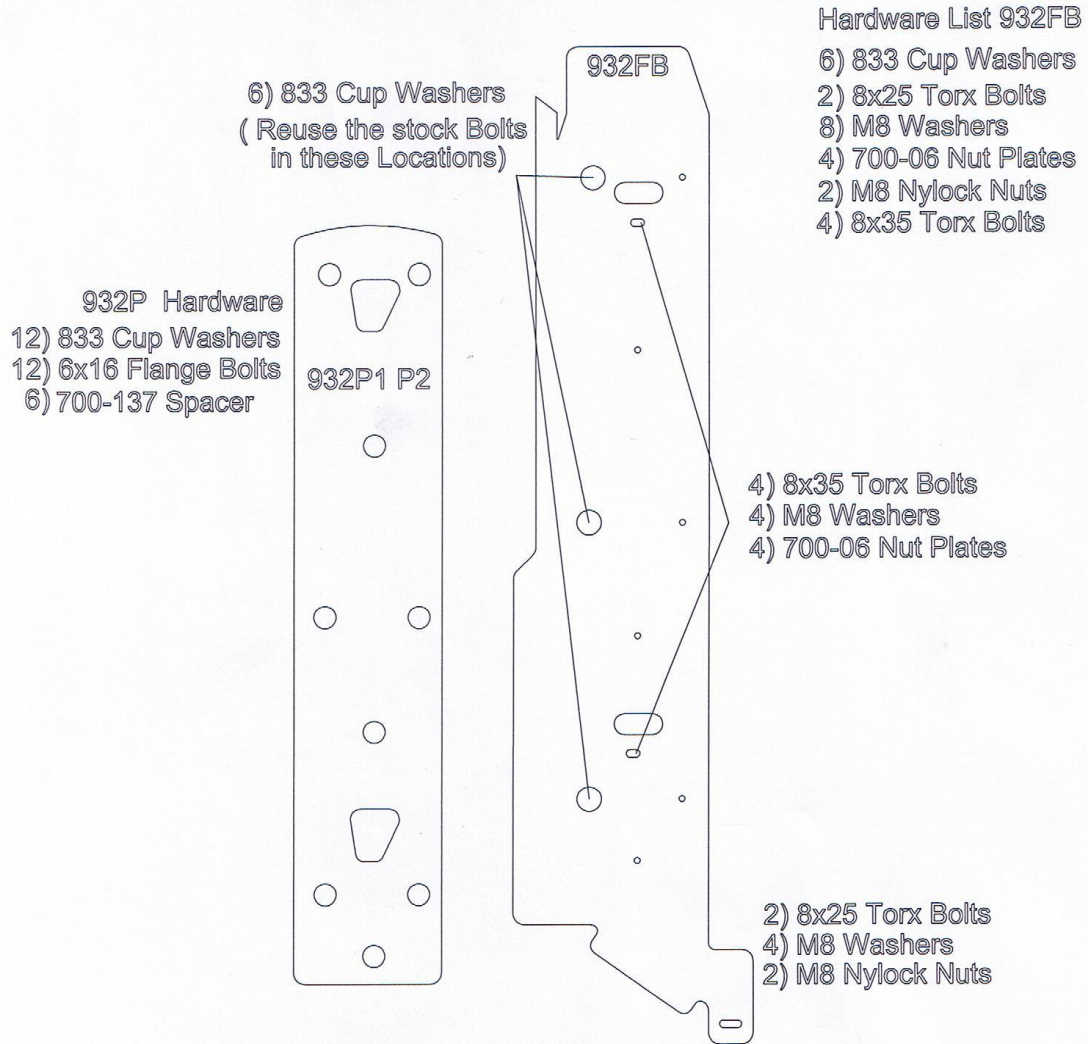
767R

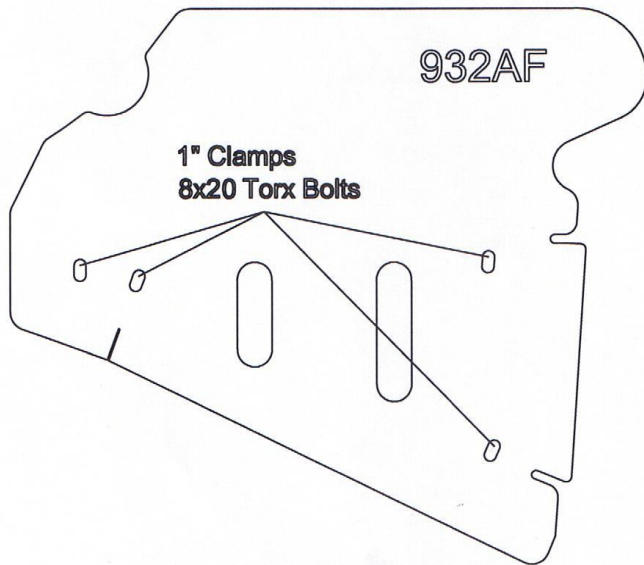
- 4) 700-06 Nut Plates
- 4) 8x25 Torx Bolts
- 4) M8 Washers
- 3) 833 Cup Washers
- 3) 6x16 Flange Bolts
- 1) M6 tap and tap handle

932AR

- 4) 8x55 Torx Bolts
- 4) M8 Nylock Nuts
- 12) M8 Washers
- 4) 8x25 Torx Bolts
- 2) 700-40 Bar Clamps

932FB Hardware list and Placement Guide





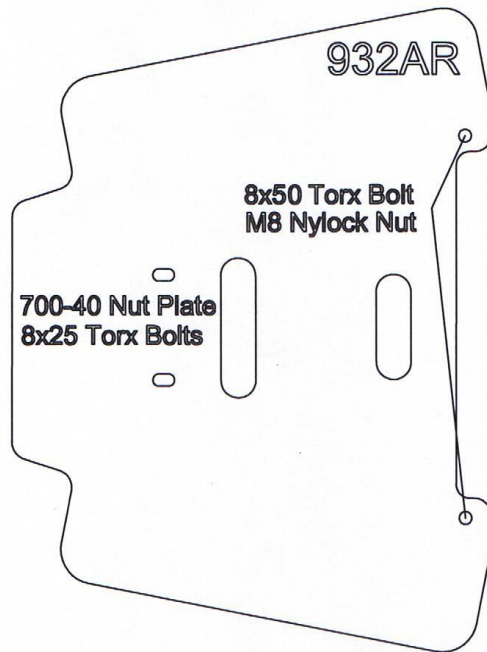
Hardware List

932AF

8) 1" Clamps

8) 8x20 Torx Bolts

8) M8 Washers



932AR

4) 8x50 Torx Bolts

4) M8 Nylock Nuts

12) M8 Washers

4) 8x25 Torx Bolts

2) 700-40 Bar Clamps



UTV & ATV Armor Kit Installation Tips

Thank for your purchase of this Ricochet Off-Road Armor Kit. All of our kits are custom designed to fit each model and should install hassle free with no additional modifications required. Please carefully read through all included instruction sheets before beginning your install.

The tips described on this sheet are general mounting tips that may or may not apply to your particular model, refer to the attached model specific instructions for a step by step mounting procedure.

If you do encounter a problem during installation please check the FAQ on our website or feel free to contact us by phone or email using the contact info at the bottom of this page.

Required Tools:

(refer to your hardware placement guide for bolt sizes)

Button Head TORX Bolts: (socket bit is highly recommended)

8mm bolts use a T-40 TORX bit

6mm bolts use a T-30 Torx bit

Hex Bolts & Nuts:

10mm bolts uses 17mm

8mm bolts uses 13mm

6mm bolts uses 10mm

1/4"-20 bolts uses 7/16"

Drill Bits:

While we try to avoid drilling whenever possible some models require one or two mounting points to be match drilled. When instructions call for a drilled mounting point use an **11/32"** bit to match drill through the mounting point on the skid plate only after the plate has been fully secured to your machine using the other hardware listed on your hardware guide.

Locking Nuts:

Most sets will include two types of locking nuts. Loose nuts are Nylock, and any nuts welded onto other hardware are pinch-style Stover lock nuts. It is highly recommended that you use a bit of Anti-seize or a drop of oil on the threads of the welded-on pinch style nuts, this will make the bolts go on and come off much easier.

Other helpful tips:

- Before you begin the installation organize all the included hardware according to the hardware placement sheet so you can quickly find the correct bolts and brackets when you need them.
- Install all bolts finger-tight at first until all hardware has been installed, this will give you maximum adjustability.
- When using the cupped washers to secure the plates to factory mounting points do not over torque the bolts because the threads can strip easily. If you do strip one out the simplest way to repair the thread is to use a 1/4"-20 x 5/8" self tapping bolt.
- You may find it easier to remove the rear tires when installing the rear a-arm guards, it's typically very tight and hard to see when the tires are left on.

Contact us at 1-866-273-1197 or dh_gibbs@comcast.net with any questions or concerns.

Hardware List for P/N 7555/F

Bash Plate (P/N 755T)

- 5) 8 x 25mm Button Head Bolts
- 1) 1/4" x 20 Hex Bolt
- 5) 8mm Flat Washers
- 1) 1/4" Lock Washer
- 5) #700-06 Nut Plates
- 1) #833 Cupped Washer

700-06



700-07



700-36



Center Skid Plate (P/N 755M)

- 11) 1/4 x 20 Hex Bolts
- 11) 1/4" Lock Washers
- 11) #833 Cupped Washer

Rear Skid Plate (P/N 755R)

- 2) 8 x 25mm Button Head Bolts
- 1) 1/4 x 20 Hex Bolt
- 2) 8mm Flat Washers
- 1) 1/4" Lock Washer
- 1) #833 Cupped Washer
- 2) #700-06 Nut Plate

Front A-Arm Guards (P/N 755AFA & 755AFB)

- 8) 1" Clamps
- 8) 8 x 20mm Button Head Bolts
- 8) 8mm Flat Washers

Floorboard Skids (P/N 755FBA & 755FBB)

- 8) 8 x 20mm Button Head Bolts
- 4) 8 x 25mm Button Head Bolts
- 2) 8 x 30mm Button Head Bolts
- 6) 5/16" HD Flat Washers (larger washer)
- 10) 8mm Flat Washers
- 4) #700-36 Nut Plates
- 4) #700-07 Nut Plates
- 2) 8mm Nylock Nuts

Rear A-Arm Guards (P/N 755ARA & 755ARB)

- 8) #826 Clamps
- 8) 8 x 20mm Button Head Bolts
- 8) 8mm Flat washers

Mouting Tips

- Begin by removing all factory plastic skid plates.
- Apply a drop of oil or anti-sieze compound to the threads off each of the locking nuts welded on to the clamps and nut plates.
- Install the #700-07 Nut Plate inside the floor board bracing bar as shown in Fig 1. Use the larger HD washer & the 8 x 20mm Bolt to secure it in place.
- Slide the #700-36 Nut Plate into place inside the floorboard bracing bar as shown in Fig 2.
- Now install your skid plates using the hardware listed on your hardware placement guide, leave everything loose at first until all the bolts are threaded into place. Then you may tighten everything down keeping the plates butted up against one another to create smooth transitions between the plates
- To provide extra support you may want to consider bolting the front of the Floorboard skids to the floorboards themselves. After the floorboard skids have been installed match drill through the front mouting point using an 11/32" bit. Drill completely through the floorboard itself and use the Large HD washer and Nylock nut on the floorboard side to complete the installation.

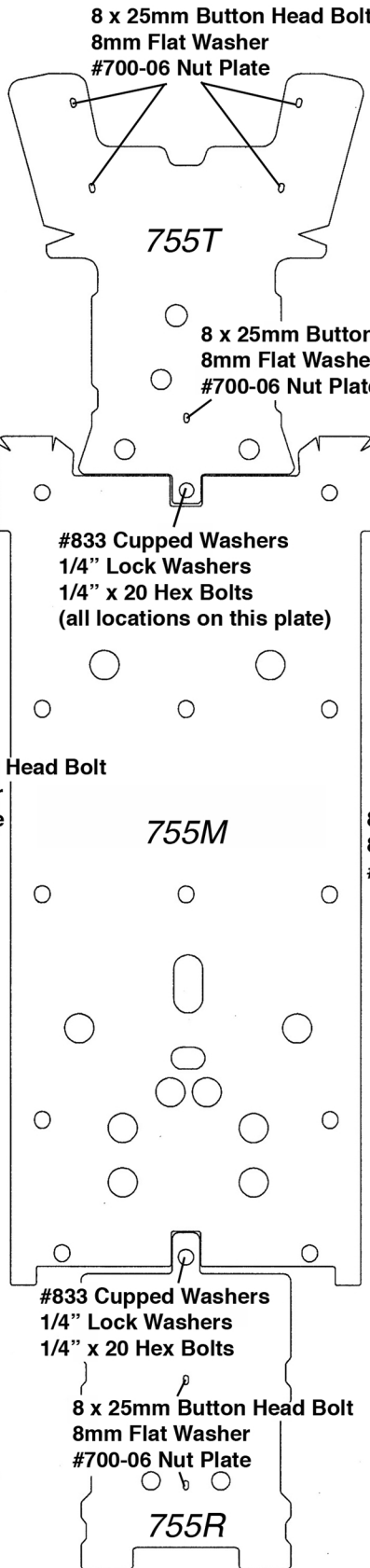


Fig 1



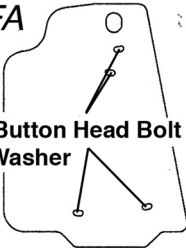
Fig 2

Clamp & Hardware Placement for P/N 755F



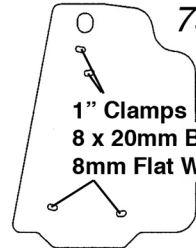
755AFA

1" Clamps
8 x 20mm Button Head Bolt
8mm Flat Washer



755AFB

1" Clamps
8 x 20mm Button Head Bolt
8mm Flat Washer



755T

8 x 25mm Button Head Bolt
8mm Flat Washer
#700-06 Nut Plate

(Optional Mounting Point)
8 x 30mm Button Head Bolt
8mm Flat Washer
HD-8mm Flat Washer*
8mm Nylock Nut
*(Install Larger Washer on floorboard side)

8 x 20mm Button Head Bolt
8 x 25mm Button Head Bolt
8mm Flat Washer
5/16" HD Flat Washer
#700-07 Nut Plate

(Optional Mounting Point)
8 x 30mm Button Head Bolt
8mm Flat Washer
HD 8mm Flat Washer*
8mm Nylock Nut
*(Install Larger Washer on floorboard side)

8 x 20mm Button Head Bolt
8 x 25mm Button Head Bolt
8mm Flat Washer
5/16" HD Flat Washer
#700-07 Nut Plate

8 x 20mm Button Head Bolt
8mm Flat Washer
#700-36 Nut Plate

#833 Cupped Washers
1/4" Lock Washers
1/4" x 20 Hex Bolts
(all locations on this plate)

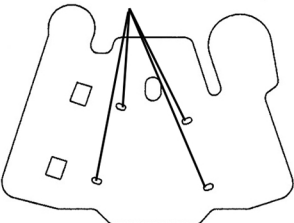
8 x 20mm Button Head Bolt
8mm Flat Washer
#700-36 Nut Plate

755M

755FBA

755FBB

#826 Clamp
8 x 20mm Button Head Bolt
8mm Flat Washer



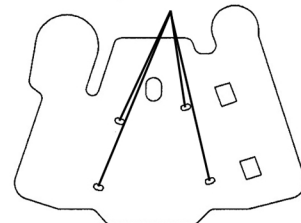
755ARA

#833 Cupped Washers
1/4" Lock Washers
1/4" x 20 Hex Bolts

8 x 25mm Button Head Bolt
8mm Flat Washer
#700-06 Nut Plate

755R

#826 Clamp
8 x 20mm Button Head Bolt
8mm Flat Washer



755ARB